

# PRECISION DIAL INDICATORS

JEWELLED BEARING

**INSPECTION CERTIFICATE**  
TRACEABLE TO NIST

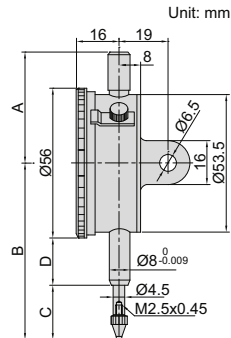


2313-1A

- Graduation: 0.001mm
- Jeweled bearing
- Supplied with limit pointers and bezel clamp
- Optional accessory: backs (page 129~130), contact points (page 126~128)

(mm)

Code	Range	Accuracy	Hysteresis	Range/rev	Dial reading	Remark	A	B	C	D
2313-1FA *	1mm	5μm	2μm	0.2mm	0-100-0	flat back	45	62.5	19.5	15
2313-2FA *	2mm	6μm	2.5μm	0.2mm	0-100-0	flat back	45	62.5	19.5	15
2313-1A *	1mm	5μm	2μm	0.2mm	0-100-0	lug back	45	62.5	19.5	15
2313-2A *	2mm	6μm	2.5μm	0.2mm	0-100-0	lug back	45	62.5	19.5	15



\* Supplied with manufacturer inspection certificate traceable to NIST USA