

COMPACT DIAL INDICATORS

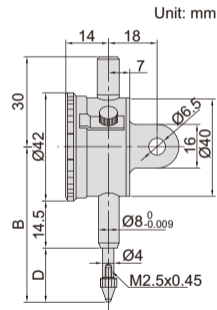
- Meet DIN878
- Jeweled bearing
- Supplied with limit pointers and bezel clamp
- Optional accessory: backs (page 129~130), contact points (page 126~128)



2311-5

JEWELLED
BEARING

**INSPECTION
CERTIFICATE**
TRACEABLE TO NIST



(mm)

Code	Range	Graduation	Accuracy	Hysteresis	Range/rev	Dial reading	Remark	B	D
2311-3F *	3mm	0.01mm	12 μ m	3 μ m	0.5mm	0-50	flat back	46	10.5
2311-5F *	5mm	0.01mm	14 μ m	3 μ m	0.5mm	0-50	flat back	48	12.5
2311-3 *	3mm	0.01mm	12 μ m	3 μ m	0.5mm	0-50	lug back	46	10.5
2311-5 *	5mm	0.01mm	14 μ m	3 μ m	0.5mm	0-50	lug back	48	12.5

* Supplied with manufacturer inspection certificate traceable to NIST USA