

## DIAL INDICATORS (LONG STROKE, BASIC TYPE)

- Supplied with limit pointers and bezel clamp
- Packed in carton box
- Optional accessory: backs (page 129~130), contact points (page 126~128)

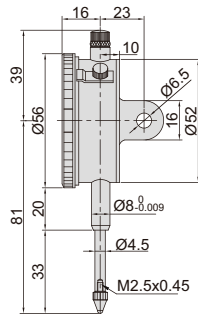


**2302-25**

carton box



Unit: mm



Code	Range	Graduation	Accuracy	Hysteresis	Range/rev	Dial reading	Remark
<b>2302-25F *</b>	25mm	0.01mm	35 $\mu$ m	7 $\mu$ m	1mm	0-100	flat back
<b>2302-25 *</b>	25mm	0.01mm	35 $\mu$ m	7 $\mu$ m	1mm	0-100	lug back with spare flat back

\* Supplied with manufacturer inspection certificate traceable to NIST USA