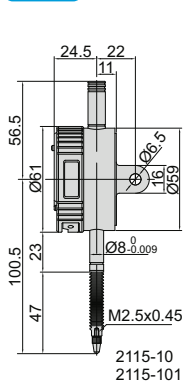
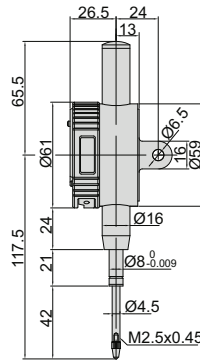


**DATA  
OUTPUT**



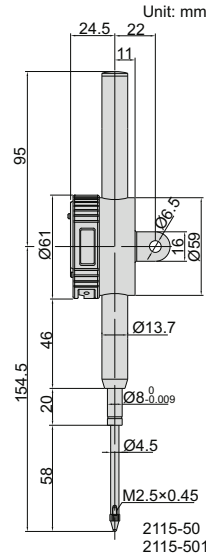
**2115-10**



**2115-25**



**2115-25**



**2115-50**

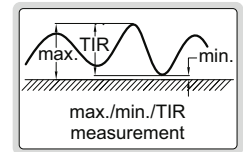


**2115-50**

warning when over tolerance



max./min./TIR



**Resolution 0.001mm/0.00005"**

Code	Range	Dust/waterproof	Accuracy	Hysteresis	Remark
<b>2115-101 *</b>	12.7mm/0.5"	IP65	5µm	2µm	lug back
<b>2115-251 *</b>	25.4mm/1"	IP54	5µm	3µm	lug back
<b>2115-501 *</b>	50.8mm/2"	IP54	6µm	3µm	lug back
<b>2115-101F *</b>	12.7mm/0.5"	IP65	5µm	2µm	flat back
<b>2115-251F *</b>	25.4mm/1"	IP54	5µm	3µm	flat back
<b>2115-501F *</b>	50.8mm/2"	IP54	6µm	3µm	flat back

**Resolution 0.01mm/0.0005"**

Code	Range	Dust/waterproof	Accuracy	Hysteresis	Remark
<b>2115-10 *</b>	12.7mm/0.5"	IP65	20µm	10µm	lug back
<b>2115-25 *</b>	25.4mm/1"	IP54	20µm	10µm	lug back
<b>2115-50 *</b>	50.8mm/2"	IP54	30µm	10µm	lug back
<b>2115-10F *</b>	12.7mm/0.5"	IP65	20µm	10µm	flat back
<b>2115-25F *</b>	25.4mm/1"	IP54	20µm	10µm	flat back
<b>2115-50F *</b>	50.8mm/2"	IP54	30µm	10µm	flat back

spindle lift knob is included (except 2115-101/101F, 2115-10/10F)



- Dust/waterproof
- Button function: on/off, zero, mm/inch, data preset, tolerance, change measuring direction, max./min./TIR measurement, absolute/incremental measurement
- Keep preset data and tolerance data in memory after restart
- CR2032 battery, automatic power off
- Data output
- Optional accessory: data output cable (code 7315-, 7302-, 7305-), backs (page 129~130), contact points (page 126~128)

\* Supplied with manufacturer inspection certificate traceable to NIST USA