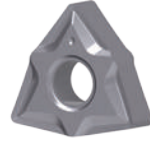


WNMP



MAGIA

DESIGNATION	GRADE			Vc	PVD/CVD	MATERIAL RECOMMENDATION	CATALOG #
WNMP 060404 NN	LT 1000	●	○		PVD		T0001954
WNMP 060408 NN	LT 1000	●	○		PVD		T0001955
WNMP 080408 NN	LT 1000	●	○		PVD		T0001956
	LT 1005	●	○		CVD		T0004106
	LT 1025	●	○		CVD		T0004157

ALPHA

DESIGNATION	GRADE			Vc	PVD/CVD	MATERIAL RECOMMENDATION	CATALOG #
WNMP 060404 NN	LT 10	●	○		PVD		T0000306
WNMP 060408 NN	LT 10	●	○		PVD		T0000307
WNMP 080408 NN	LT 10	●	○		PVD		T0000308

MATERIAL GROUP

- | | |
|-----------------|-------------------|
| STEEL | HIGH TEMP ALLOYS |
| STAINLESS STEEL | HARDENED MATERIAL |
| CAST IRON | ALU(>8%Si) |

COOLANT



CHIPBREAKER



CUTTING SPEED



DEPTH OF CUT



- | | |
|---|-------------------|
| | STABLE CONDITIONS |
| ● | RECOMMENDED |
| ◐ | ACCEPTABLE |
| ○ | NOT RECOMMENDED |

- | | |
|---|-----------------|
| | INTERRUPTED CUT |
| ● | RECOMMENDED |
| ◐ | ACCEPTABLE |
| ○ | NOT RECOMMENDED |

- | | |
|----|-------------------|
| Vc | RECOMMENDED SPEED |
| | MODERATE |
| | LOW TO MODERATE |
| | MODERATE TO HIGH |

ORDERING EXAMPLE

- | | |
|----------------------------|------------------------|
| QUANTITY | 10 PIECES |
| DESIGNATION + GRADE | CCMT 060204 NN LT 1000 |
| CATALOG NUMBER | T0001888 |