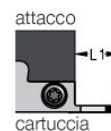
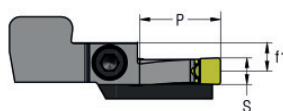
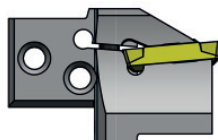
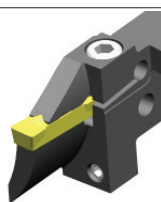


## GLMC<sup>R/L</sup> P92 2 cartucce per sistema modulare Griplock Modular



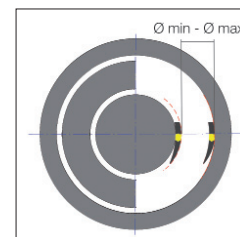
Il disegno rappresenta la cartuccia destra R

S	DESCRIZIONE	STOCK		Ø min	Ø max	DIMENSIONI			RICAMBI		
		R	L			P	L1	f1	Vite	Chiave	Coppia
60	GLMC <sup>R/L</sup> P92 2 60 40	●	●	40	70	20.5	29.5	9.5	M 6x20	P5	14 Nm
	60 58	●	●	58	100	20.5	29.5	9.5	M 6x20	P5	14 Nm
	60 88	●	●	88	180	20.5	29.5	9.5	M 6x20	P5	14 Nm
	60 168	●	●	168	400	20.5	29.5	9.5	M 6x20	P5	14 Nm
	60 220	●	●	220	∞	20.5	29.5	9.5	M 6x20	P5	14 Nm
80	GLMC <sup>R/L</sup> P92 2 80 50	●	●	50	64	25.5	27.5	8.6	M 6x20	P5	14 Nm
	80 63	●	●	63	82	25.5	27.5	8.6	M 6x20	P5	14 Nm
	80 80	●	●	80	115	25.5	27.5	8.6	M 6x20	P5	14 Nm
	80 105	●	●	105	160	25.5	27.5	8.6	M 6x20	P5	14 Nm
	80 155	●	●	155	510	25.5	27.5	8.6	M 6x20	P5	14 Nm

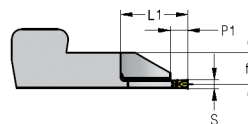
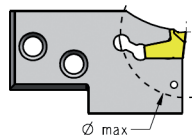
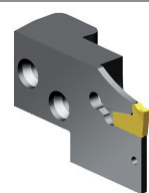
Ø min - Ø max = intervallo diametri entro i quali effettuare la prima scanalatura

**INSERTI**


p. 64



## GLMC<sup>R/L</sup> F16 cartucce per sistema F16



Il disegno rappresenta la cartuccia sinistra L

S	DESCRIZIONE	STOCK		Ø max	DIMENSIONI			RICAMBI	
		R	L		P1	L1	Chiave	Testa chiave	
20	GLMC <sup>R/L</sup> F16 20 50	●	●	50	6	25.5	AWF16	AWF161	
30	GLMC <sup>R/L</sup> F16 30 50	●	●	50	6	25.5	AWF16	AWF161	
40	GLMC <sup>R/L</sup> F16 40 50	●	●	50	6	25.5	AWF16	AWF161	

Ø max = diametro massimo troncabile

**INSERTI**


p. 163