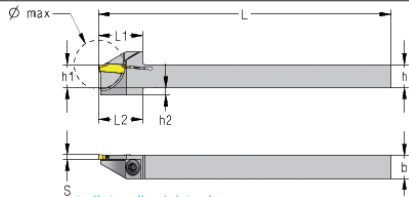


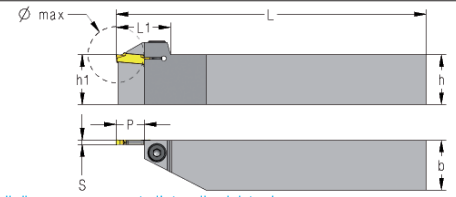
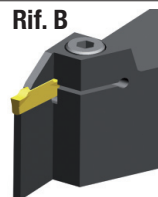
P92 S CXCB^{R/L}/_L utensili monoblocco

Rif. A


Con rinforzo radiale



Il disegno rappresenta l'utensile sinistro L

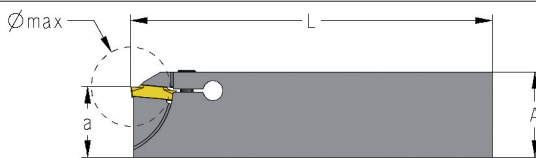
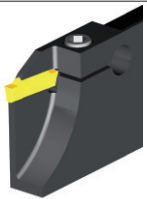
Rif. B


Il disegno rappresenta l'utensile sinistro L

S	DESCRIZIONE	STOCK		Ø max	DIMENSIONI							RICAMBI			
		R	L		P	h	h1	h2	b	L	L1	Rif.	Vite	Chiave	Coppia
20	P92 S CXCB^{R/L} 1010 K20 11	●	●	22	11	10	10	3	10	125	19	A	TXM 4x12	T15W	3.8 Nm
	1212 K20 11	●	●	22	11	12	12	-	12	125	19	A	TXM 4x16 15	T15W	3.8 Nm
	1616 K20 11	●	●	22	11	16	16	-	16	125	19	A	TXM 4x16 15	T15W	3.8 Nm
	2020 K20 11	○	○	22	11	20	20	-	20	125	22	A	M 4x16	P3	5 Nm
	2525 M20 11	○	○	22	11	25	25	-	25	150	22	A	M 4x16	P3	5 Nm
	P92 S CXCB^{R/L} 1616 K20	○	○	22	11	16	16	-	16	125	22	B	M 4x16	P3	5 Nm
	2020 K20	○	○	22	11	20	20	-	20	125	22	B	M 4x16	P3	5 Nm
	2525 M20	○	○	22	11	25	25	-	25	150	22	B	M 4x16	P3	5 Nm

Ø max = diametro massimo troncabile

P92 S CXCB^{R/L} X lame rinforzate con attacco a coda di rondine

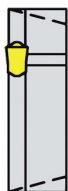
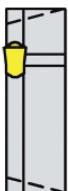


Il disegno rappresenta l'utensile sinistro L



S	DESCRIZIONE	STOCK		Ø max	DIMENSIONI					RICAMBI			
		R	L		A	P	a	b	L	L1	Vite	Chiave	Coppia
20	P92 S CXCB^{R/L} 2608 X20R	○	○	24	26	12	21.4	8	110	84	TXM 4x12/15	T15F	3.8 Nm
	2608 X20L	○	○	24	26	12	21.4	8	110	84	TXM 4x12/15	T15F	3.8 Nm

Ø max = diametro massimo troncabile


Lama L
Attacco L
 es. P92 S CXCB^{R/L}...X20L

Lama L
Attacco R
 es. P92 S CXCB^{R/L}...X20R

Lama R
Attacco L
 es. P92 S CXCB^{R/L}...X20L

Lama R
Attacco R
 es. P92 S CXCB^{R/L}...X20R

INSERTI

PORTALAME

DATI TECNICI
