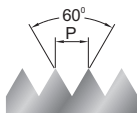
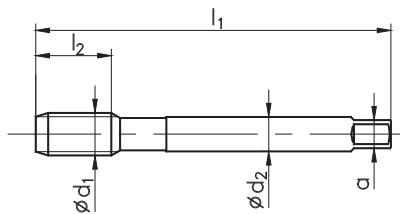


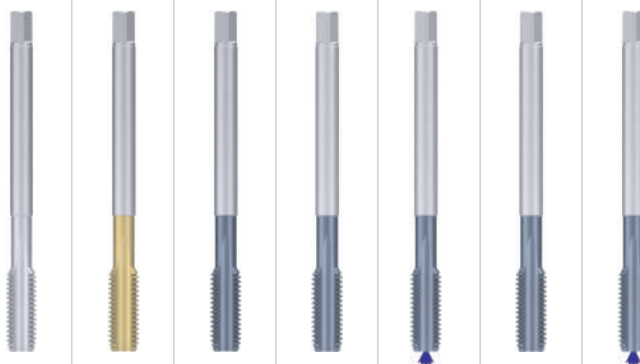
## Gwint metryczny drobnozwojny ISO DIN-13

ISO Metric fine thread DIN-13  
Metrisches ISO-Feingewinde DIN-13

HSSE

HSSE  
PM

## DIN-374



Zastosowanie / Application / Einsatzgebiete

800

800

1400

GG

GG

GG

GG

Materiał obrabiany / Material / Werkstoff

P1.2-P1.3

P1.3-P1.4  
K3.2-K3.3P1.5-P1.6, K3.1,  
N4.6, N4.9

K3.1-K3.3

K3.1-K3.3  
N4.2-N4.3, N4.11K3.1-K3.3  
N4.2-N4.3K3.1-K3.3  
N4.2-N4.3, N4.11

Rodzaj materiału / Quality of material / Qualität

HSSE

HSSE

PM/HSSE

PM/HSSE

PM/HSSE

PM/HSSE

PM/HSSE

Typ otworu / Hole type / Lochform



Wykonanie / Execution / Ausführung

Rodzaj powłoki / Coating / Beschichtung

TiN

TiCN

TiCN

TiCN

TiCN

TiCN

Nakrój / Chamfer / Anschnitt

C / 2-3P

C / 2-3P

C / 2-3P

C / 2-3P

C / 2-3P

E / 1,5-2P

E / 1,5-2P

Tolerancja / Tolerance / Toleranz

ISO2 (6H)

6HX

6HX

6HX

6HX

6HX

6HX

MF $\varnothing d_1$	P	$l_1$	$l_2$	$\varnothing d_2$	a		INDEX	D2-121101	D2-123101	D4-125901	D2-125501	D2-125551	D2-145501	D2-145551
M 8 x 1	1	90	20	6	4,9	7,0	0083	●	○		●			
M 9 x 1	1	90	20	7	5,5	8,0	0093	○	○		○			
M 10 x 0,75	0,75	90	18	7	5,5	9,2	0102	●	○		●			
M 10 x 1	1	90	20	7	5,5	9,0	0103	●	○		●			
M 10 x 1,25	1,25	100	20	7	5,5	8,8	0104	●	○		○			
M 11 x 1	1	90	20	8	6,2	10,0	0113	●	○		●			
M 12 x 1	1	100	20	9	7	11,0	0123	●	○		●			
M 12 x 1,25	1,25	100	20	9	7	10,8	0124	●	○		●			
M 12 x 1,5	1,5	100	20	9	7	10,5	0125	●	●	●	●	●	●	●
M 14 x 1	1	100	20	11	9	13,0	0143	●	○	○	○			
M 14 x 1,25	1,25	100	20	11	9	12,8	0144	●	○	○	○			
M 14 x 1,5	1,5	100	20	11	9	12,5	0145	●	●	●	●	○	●	○
M 15 x 1	1	100	20	12	9	14,0	0153	○	○					
M 16 x 1	1	100	20	12	9	15,0	0163	●	○	○	○			
M 16 x 1,5	1,5	100	20	12	9	14,5	0165	●	●	●	●	●	●	●
M 18 x 1	1	110	24	14	11	17,0	0183	●	○		○			
M 18 x 1,5	1,5	110	24	14	11	16,5	0185	●	○	●	●	○	●	○
M 18 x 2	2	125	32	14	11	16	0186	●	○					
M 20 x 1	1	125	24	16	12	19	0203	●	○		●			
M 20 x 1,5	1,5	125	24	16	12	18,5	0205	●	●		●			
M 20 x 2	2	140	32	16	12	18	0206	●	○					
M 22 x 1	1	125	24	18	14,5	21	0223	●	○		○			
M 22 x 1,5	1,5	125	24	18	14,5	20,5	0225	●	○		●			
M 22 x 2	2	140	32	18	14,5	20	0226	●	○		○			
M 24 x 1	1	140	27	18	14,5	23	0241	●	○					
M 24 x 1,5	1,5	140	27	18	14,5	22,5	0245	●	○		●			
M 24 x 2	2	140	27	18	14,5	22	0246	●	○					
M 25 x 1,5	1,5	140	27	18	14,5	23,5	0255	●	○					
M 26 x 1,5	1,5	140	27	18	14,5	24,5	0265	●	○		●			
M 27 x 1,5	1,5	140	27	20	16	25,5	0275	●	○		○			
M 27 x 2	2	140	27	20	16	25	0276	●	○		○			

Przykład zamawiania / Example of order / Beispiel einer Bestellung:

D4-125901-0125  
DIN-374 C M12x1,5 6HX HSSE-PM 1400 TiCN

● Dostępne z magazynu, cena w cenniku

Available from stock, the price in the price list / Ab Lager lieferbar, der Preis in der Preisliste

○ Do szybkiej dostawy, cena na zapytanie

For quick delivery, price on request / Für die schnelle Lieferung, Preis auf Anfrage