

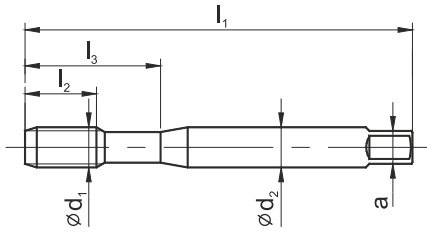
ISO Metric fine thread DIN-13



HSSE  
PM

TC

DIN  
371



**GG** **GAL**



Material groups

P M K	P M K	P M K	P M K	P M K	P M K	P M K
N S H	N S H	N S H	N S H	N S H	N S H	N S H

Hole type



Quality of material

HSSE-PM HSSE-PM HSSE-PM HSSE-PM HSSE-PM HSSE-PM HSSE-PM

Coating

TC TC TC TC TC TC TC

Chamfer

C / 2-3P C / 2-3P E / 1,5-2P E / 1,5-2P E / 1,5-2P C / 2-3P E / 1,5-2P

MF ød <sub>1</sub>	P	l <sub>1</sub>	l <sub>2</sub>	l <sub>3</sub>	ød <sub>2</sub>	a		DIN-371									
								Norm		6HX						6HX	
								ToI.	INDEX	C2-125501	C4-125551	C2-145501	C4-145551	C4-145561	C2-505601	C4-655601	
M8x1	1,00	90	20	35	8,0	6,2	7,00	0083	●	○	●	○	○	○	●	○	
M10x0,75	0,75	90	20	35	10,0	8,0	9,20	0102	○	○	○	○	○	○	○	○	
M10x1	1,00	90	20	35	10,0	8,0	9,00	0103	●	○	●	○	○	○	●	○	
M10x1,25	1,25	100	20	39	10,0	8,0	8,80	0104	○	○	●	○	○	○	●	○	

ISO	Vc (m/min)						
P	-	-	-	-	-	-	-
M	-	-	-	-	-	-	-
K	1-60	1-60	1-60	1-60	1-60	-	-
N	-	-	-	-	-	10-30	10-30
S	-	-	-	-	-	-	-