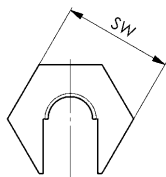
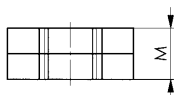


No. 6332S

Quick-action clamping nut without collar

hardened and zinc-plated, strength class 6.



Order no.	Size	SW	M	Weight [g]
88146	M 6	16	9,0	10
88534	M 8	19	10,5	15
88559	M10	22	12,5	23
88567	M12	27	15,0	44
88575	M16	34	16,0	68
88583	M20	41	22,0	85

Application:

Slide quick-action clamping nut directly over screw thread up to clamping point and then lock it. If the quick-action clamping nut base is firmly in contact at the clamping point, then the head can be locked with the base by means of a 1/4 to 1/2 turn.

Advantage:

- effortless bridging of long screw thread and clamping spindles
- easy assembly/disassembly in tight and invisible spaces
- no searching for the thread
- no seizing on the thread due to outside influences
- no impaired performance through contamination such as paint residues or even rust.



Recommendations



DIN 6379,
page 76



DIN 787,
page 70

