

## No. 6420

### Height setting screw jack with pivotable ball

Steel tempered, burnished. Ball made of hardened steel.



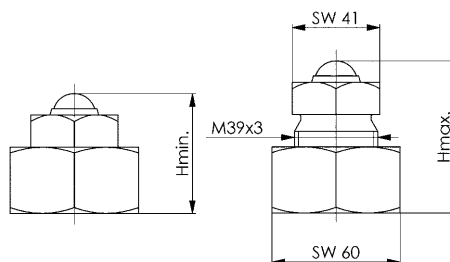
Order no.	Size	H min.	H max.	F max. [kN]	Weight [g]
72546	70	56	70	30	950

### Application:

This element with its punctual support is particularly useful in the support and alignment of free-form surfaces e.g. of workpieces which are made of cast iron and forging-grade steels. The precision of alignment is approx. 0.1 mm.

### Advantage:

- The pivotable ball minimizes the friction on the support and reduces the required operating forces.
- The use of a point-like support prevents the transmission of the torsional force created by the movement of the spindle. The position of the workpiece remains unchanged.
- The simple and rugged construction provides for a long lasting service life.



### Recommendations



## No. 6400

### Screw jack with flat support

Centring hole dia. 12 mm. Spindle: Trapezoidal thread, self-locking with end stopbody. Tempering steel, varnished.



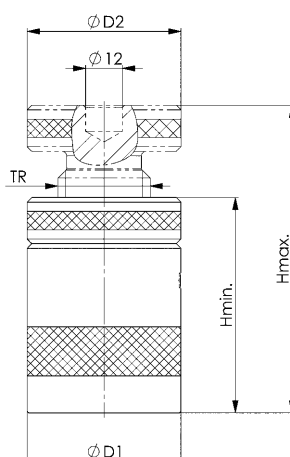
Order no.	Size	H min.	H max.	TR	D1	D2	F max. [kN]	Weight [g]
72397	50	38	50	20x 4	31	31	25	190
72389	52	42	52	30x 4	50	50	100	550
72405	70	50	70	30x 4	50	50	100	620
72413	100	70	100	30x 4	50	50	100	900
72421	140	100	140	40x 7	68	68	120	2760
72439	210	140	210	50x 8	80	70	170	4600
72447	300	190	300	65x10	100	80	350	9000
72496	200	140	200	65x10	100	80	350	6900
72504	280	190	280	80x10	140	110	600	19000

### Advantage:

Higher support forces through material optimisation with sizes 50 - 140.

### Note:

Size 50 without centring hole  $\varnothing$  12 mm. The sizes 52-100 are suitable for clamps with a slot width of approx. 14-22 mm. The screw jack no. 6430 represents a useful addition for large clamping heights. The sizes 140-300 are suitable for clamps with a slot width of approx. 20-40 mm. For these, the screw jacks no. 6435S represent a useful addition for large clamping heights. When using clamps DIN 6315B, 6315C and 6315GN from 26 mm slot width, we recommend, by way of precaution, fixing cap no. 6443. The sizes 200-280 are intended for supporting large workpieces. Suitable attachments for screw jack sizes 52-280 are nos. 6440, 6441, 6442, 6443 and 6445. The suitable support for sizes 52-100 is no. 6442.



### Recommendations



Subject to technical alterations.