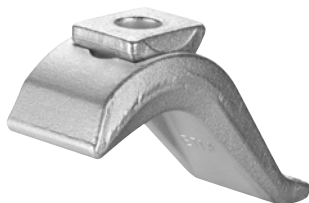


## No. 6321

### Clamp, continuously adjustable

with U-piece. Steel, forged and tempered, galvanised.



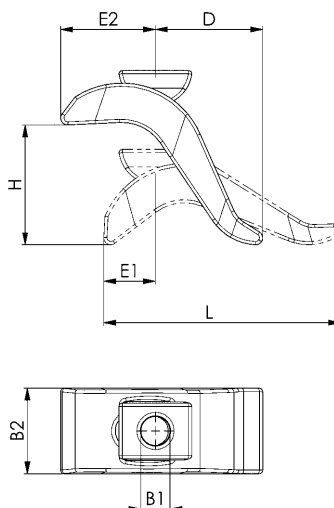
| Order no. | Size | for clamping screw | H    | B1 | B2 x L | D  | E1 | E2 | Weight [g] |
|-----------|------|--------------------|------|----|--------|----|----|----|------------|
| 71522     | 17   | M12, M14, M16      | 0-75 | 17 | 50x140 | 60 | 30 | 55 | 900        |
| 71530     | 21   | M20                | 0-85 | 21 | 60x175 | 80 | 40 | 70 | 1600       |

### Application:

Stepless clamp for fast coverage of several ranges of work height without additional supports. Low space requirement on machine table. Heavy-duty design and specially suitable for clamping of press- and punching tools.

### Note:

Suitable fastening elements: DIN 787 clamping bolts, DIN 6340 washers and DIN 6330B hexagon nuts.



## No. 6321

### Clamp, continuously adjustable, complete

with DIN 787, DIN 6340, DIN 6330B and U-piece. Steel, forged and tempered, galvanised.



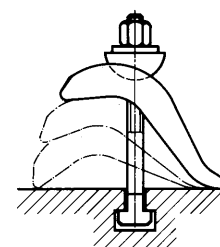
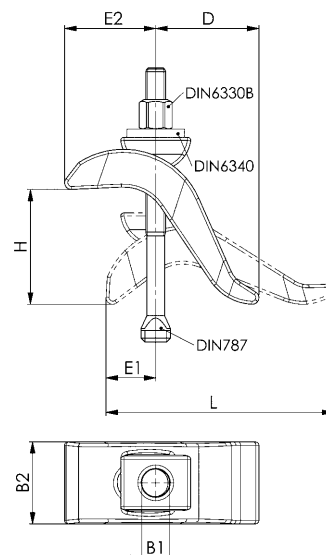
| Order no. | Slot | with clamping bolt | H    | B1 | B2 x L | D  | E1 | E2 | Weight [g] |
|-----------|------|--------------------|------|----|--------|----|----|----|------------|
| 74906     | 12   | M12x12x125         | 0-50 | 17 | 50x140 | 60 | 30 | 55 | 1070       |
| 74914     | 14   | M12x14x125         | 0-50 | 17 | 50x140 | 60 | 30 | 55 | 1080       |
| 74922     | 16   | M16x16x160         | 0-75 | 17 | 50x140 | 60 | 30 | 55 | 1270       |
| 74930     | 18   | M16x18x160         | 0-75 | 17 | 50x140 | 60 | 30 | 55 | 1280       |
| 74971     | 20   | M20x20x200         | 0-85 | 21 | 60x175 | 80 | 40 | 70 | 2300       |
| 74963     | 22   | M20x22x200         | 0-85 | 21 | 60x175 | 80 | 40 | 70 | 2370       |

### Application:

Stepless clamp for fast coverage of several ranges of work height without additional supports. Low space requirement on machine table. Heavy-duty design and specially suitable for clamping of press- and punching tools.

### Note:

With the clamping jaw size 17 a maximum clamping height of 75 mm can be achieved with screws for T-slots DIN 787, length 160 mm.



### Recommendations



No. 6312V,  
page 12



No. 6312VT,  
page 13

Subject to technical alterations.