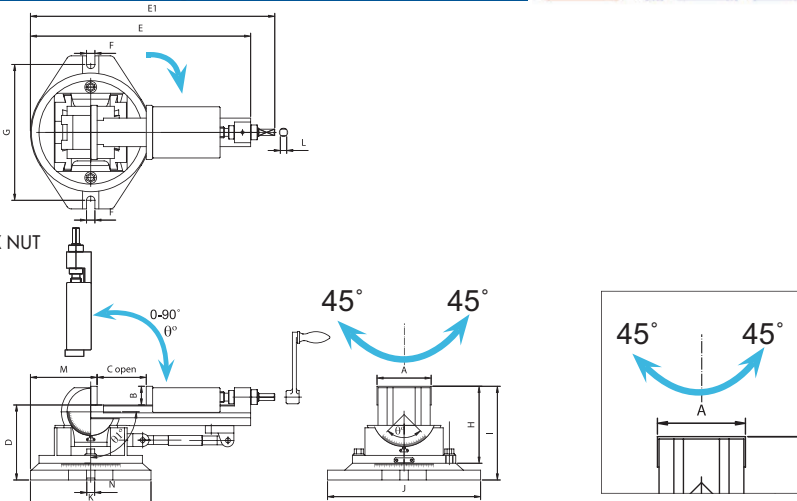
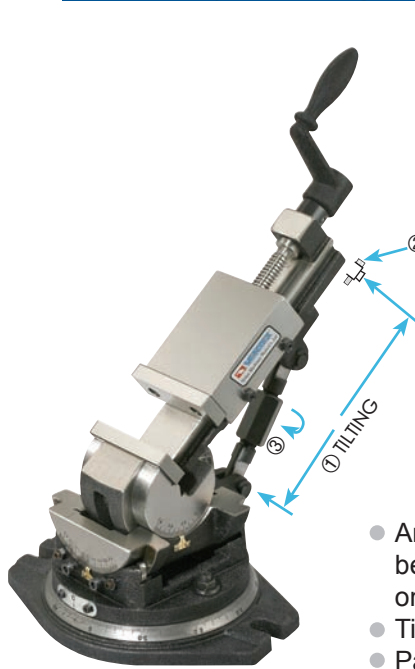




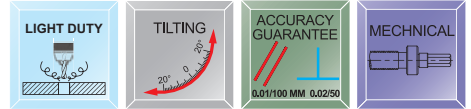
3-Way Angle Milling Vise



ANGLE MILLING VISE



- Angles can be set in 3 dimensions. Swivels 360° around base. The vise can be elevated through 90° from the horizontal to vertical. And also can be tilted on its lower angle base up to 45° in both right and left.
- Tilting of any angle all keep the workpiece steady, smooth.
- Particularly the clamping part of screw is strengthened by a bush made of gunmetal.
- Turn ① to adjust tilting angle. fix ② to lock.



Specifications

| ORDER NO. | A | B | C OPEN | D | E | E1 | F | G | H | I | J | K | L | M | N | θ | θ_1 | MAX. Clamp Force (kgf) | G.W. (kgs) | Meas CFT | CODE NO. |
|-----------|-----|----|--------|-----|-----|-----|----|-----|-----|-----|-----|-----|----|-----|----|----------|------------|------------------------|------------|----------|----------|
| VW-3 | 80 | 31 | 85 | 126 | 335 | 370 | 15 | 210 | 127 | 157 | 240 | 185 | 10 | 95 | 16 | -45°~45° | -0°~90° | 800 | 16.7 | 40x21x19 | 1002-080 |
| VW-4 | 110 | 38 | 116 | 152 | 448 | 497 | 17 | 276 | 157 | 190 | 311 | 245 | 13 | 135 | 16 | -45°~45° | -0°~90° | 1000 | 32.7 | 56x27x23 | 1002-081 |
| VW-5 | 135 | 40 | 145 | 170 | 530 | 580 | 17 | 310 | 173 | 210 | 358 | 271 | 13 | 140 | 16 | -45°~45° | -0°~90° | 1600 | 49.4 | 66x31x25 | 1002-082 |



Quick Index Holder

NEW

VFV-40H

- SHANK HEX. TYPE
- FOR CUTTING 6 DIVISION TYPE
- EACH 60° FOR 1 DIVISION
- ✘ FOR CUTTING HEX. & SQUARE SHAPE ON ROUND BAR & ROD
- ✘ THROUGH HOLE

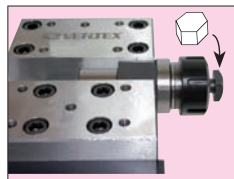
VFV-41S

- SHANK SQUARE TYPE
- FOR CUTTING 4 DIVISION
- EACH 90° FOR 1 DIVISION

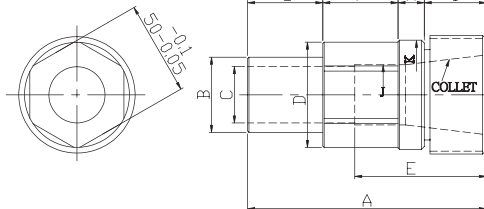
patent PAT.



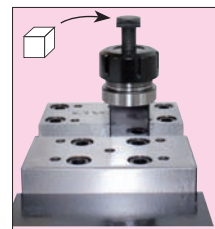
60° DIVIDING FOR PUT ON THE VISE



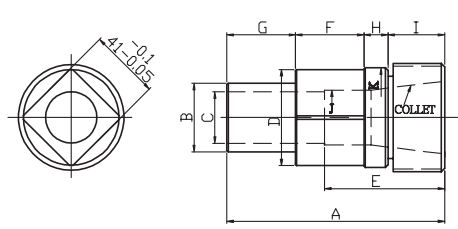
HORIZONTAL



90° DIVIDING FOR PUT ON THE VISE



VERTICAL



mm

| ORDER NO. | A | B | C | D | E | F | G | H | I | J | K | COLLET SIZE | WEIGHT KGS | CODE NO. |
|-----------|-----|----|----|----|----|----|----|----|----|----|----|--------------------|------------|----------|
| VFV-40H | 127 | 40 | 30 | 56 | 70 | 40 | 40 | 14 | 33 | 32 | 58 | ER-40 7 PCS/SET | 4.8 | 1001-101 |
| VFV-41S | 127 | 40 | 30 | 56 | 70 | 40 | 40 | 14 | 33 | 32 | 58 | ER-40 7 PCS/SET | 5.2 | 1001-102 |