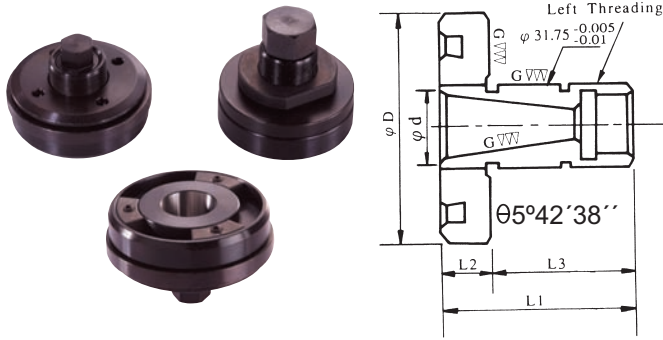


Grinding Wheel Flange



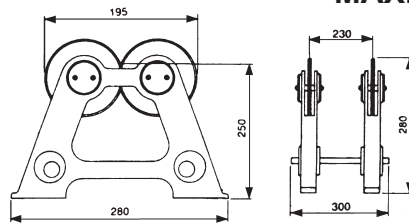
Unit: mm

ORDER NO.	ϕD	ϕd	L1	L2	L3	Brand Mark	WEIGHT (kg)	CODE NO.
FKT-250	78	25.7+0 -0.05	40	13	27	KENT PROTH	0.8	2013-010
FTA-350	75	25.4+0 -0.05	40	13	34	TA TUNG	1	2013-011

Wheel Balancing Stand

ORDER NO. WBS-300 CODE NO. 2014-001

WEIGHT: 12.5 kgs



MAX. WHEEL DIAMETER ALLOWED $\phi 500$ mm

The stand is specifically designed to improve accuracy and longer life for grinding. It is finished with cast iron and fine through hardened to HRC 55°.

Level Balancing Stand

ORDER NO. LBS-100

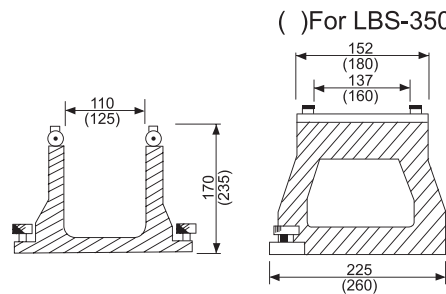
CODE NO. 2014-010

WEIGHT: 8.8 kgs

ORDER NO. LBS-350

CODE NO. 2014-011

WEIGHT: 15.1 kgs

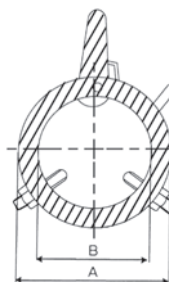
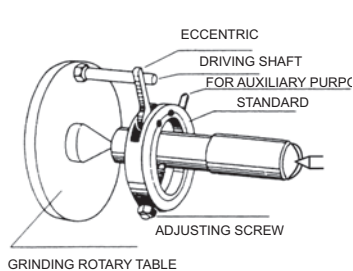


This machine encloses minute leveling instrument.

The adjustment of horizontal enable rapidly and accurately.

MAX. WHEEL DIAMETER ALLOWED $\phi 200$ mm, $\phi 350$ mm

Driving Carrier



ORDER NO	CAPACITY	A	B	WEIGHT (kg)	CODE NO.
VDC-13	$\phi 6 \sim \phi 14$	36	18	0.1	2014-020
VDC-22	$\phi 13 \sim \phi 24$	48	28	0.2	2014-021
VDC-30	$\phi 20 \sim \phi 33$	58	38	0.2	2014-022
VDC-40	$\phi 31 \sim \phi 42$	68	48	0.2	2014-023
VDC-50	$\phi 36 \sim \phi 50$	78	58	0.3	2014-024
VDC-60	$\phi 40 \sim \phi 62$	89	68	0.3	2014-025
VDC-80	$\phi 60 \sim \phi 80$	119	88	0.6	2014-026
VDC-100	$\phi 80 \sim \phi 100$	140	109	0.7	2014-027

FEATURES:

- SUITABLE FOR GRINDING OF SHAFTS.
- EASY ATTACH AND DETACH BY ONE HAND.

GRINDING WHEEL