

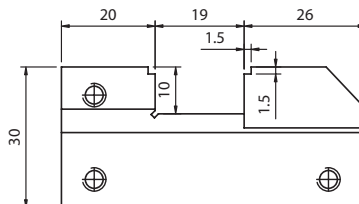
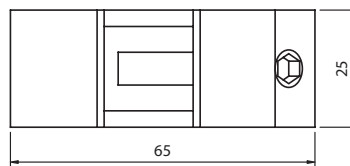
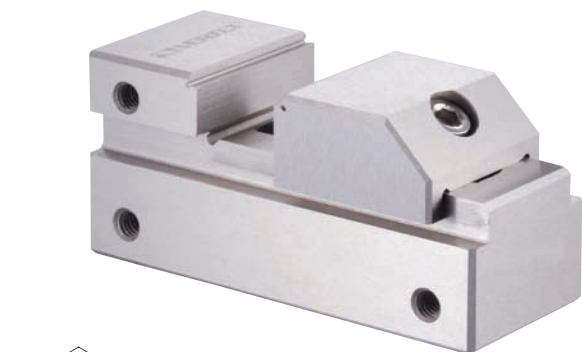


# Tool Maker Vise (STAINLESS)

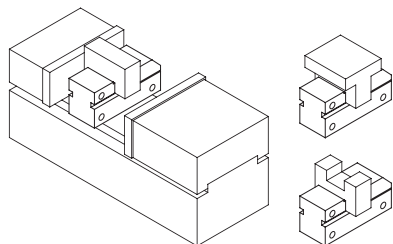


**VERTEX®**

MINI TYPE FOR EDM



Tool makers vise of mini type which can be put in a bigger vise to process the small and precise workpiece. Also it can be used in an E.D.M. machine and grinding machine.  
Squareness and parallelism: within  $\pm 0.003 / 100 \text{ mm}$   
※ Not 100% magnetic proof



ORDER NO.	MATERIAL	LENGHT	WIDTH	JAW OPENING	JAW HEIGHT	HARDEN	WEIGHT (kgs)	CODE NO.
VSTV-10V	SUS 440	65	25	19	10	HRC 56°-58°	0.3	2008-070



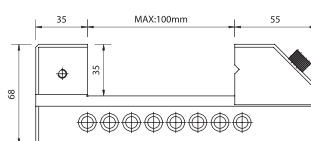
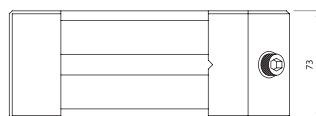
# Tool Maker Vise (STAINLESS)

ORDER NO.	WEIGHT (kgs)	CODE NO.
VBST-30	4.5	2008-075

Material: SUS 440  
Hardness: HRC 58°~60°  
Squareness: Within  $0.005 / 100 \text{ mm}$   
※ Not 100% magnetic proof

MINI TYPE FOR EDM

Unit:mm

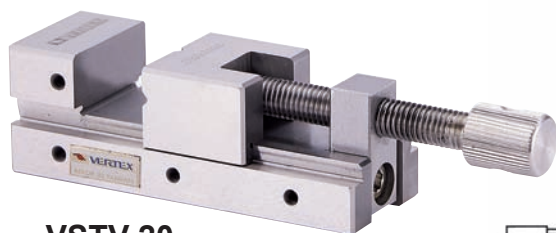


TOLERANCE	
A	$\pm 0.004 \text{ mm}$
B	$\pm 0.005 \text{ mm}$
C	$\pm 0.005 \text{ mm}$
D	$\pm 0.005 \text{ mm}$
E	$\pm 0.005 \text{ mm}$
F	$\pm 0.005 \text{ mm}$
G	$\pm 0.005 \text{ mm}$

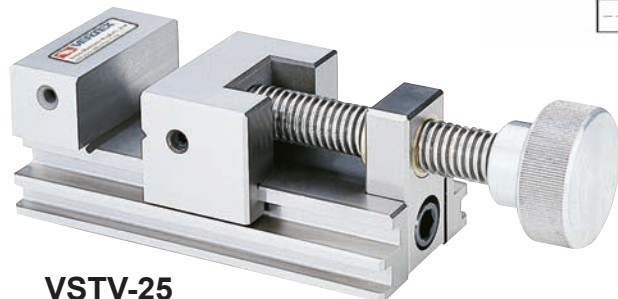
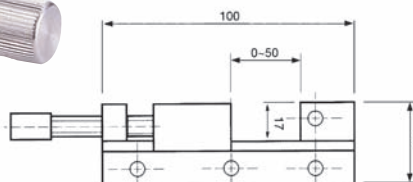


# Tool Maker Vise (STAINLESS)

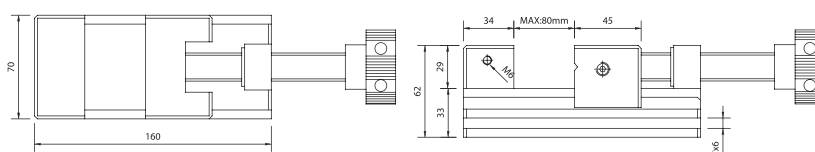
FOR EDM



VSTV-20



VSTV-25



- Material: SUS 440
- Hardness: HRC 56°
- Squareness: Within  $0.005 / 100 \text{ mm}$
- It was made by tool steel of stainless steel system and was precision ground after hardened by heat treatment. So, it will not be rusted even permeation.
- The vise can clamp workpiece by moveable Jaw without lifting. It is easier and convenient for processing small workpieces.
- ※ Not 100% magnetic proof

ORDER NO.	MATERIAL	LENGHT	HEIGHT	JAW OPENIG	JAW WIDTH	JAW HEIGHT	HARDEN	WEIGHT (kgs)	CODE NO.
VSTV-20	SUS440	100	35	50	35	17	HRC56°	1.2	2008-079
VSTV-25		160	62	80	70	29		4.4	2008-080

GRINDING MACHINE ACCESSORIES B22