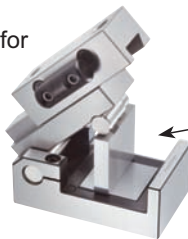


# Sine Bar With Magnetic



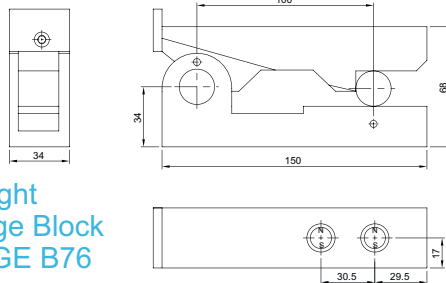
There is magnet in the bottom which can be run on any kind of machine for testing angle use.

The thread can for stopper screw



Height Gage Block  
PAGE B76

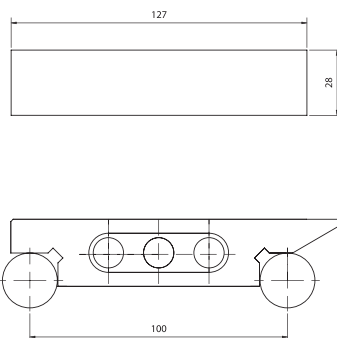
● Example



Unit:mm

ORDER NO.	SQUARNESS	ACCURACY	PARALLELISM	HARDNESS	MATERIAL	N.W. (kgs)	CODE NO.
V-S50M	0.005mm /100mm	±0.002	0.002mm/100mm	HRC50°	SK-3	0.34	2004-001
V-S100M	0.005mm /100mm	±0.002	0.002mm/100mm	HRC50°	SK-3	2.06	2004-002

# Sine Bar



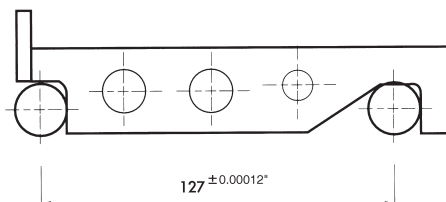
Unit:mm

ORDER NO.	LENGTH	WIDTH	HEIGHT	CENTER DISTANCE	PARALLEL	HARDEN	BLOCKS DIA.	MATERIAL	N.W (kgs)	CODE NO.
VS-100	127	28	35	0.005	0.005/100mm	HRC50°	Ø20mm	SK-3	0.76	2004-010

# Sine Bar-Inch



Change of the sine angle must be count on sine bar inspection, the bar's tolerance within 0.005 mm / 100 mm



Unit:inch

ORDER NO.	LENGTH	WIDTH	HEIGHT	CENTER DISTANCE	PARALLEL	HARDEN	BLOCKS DIA.	MATERIAL	N.W (kgs)	CODE NO.
V-S25	6-3/8"	1"	1-1/4"	127	0.00012"	HRC52°	3/4"	SK2	1	2004-020
V-S50	6-3/8"	2"	1-1/4"	127	0.00012"	HRC52°	3/4"	SK2	1.8	2004-021

## HOW TO CHOOSE THE BLOCK FOR SINE BAR

DISTANCE GAUGE BLOCK CAN GET DEGREE	SIN BAR CENTER		SIN BAR CENTER	
	←50→		←100→	
2°	1.7405	3.4899		
3°	2.6168	5.2336		
4°	3.4878	6.9756		
5°	4.3578	8.7155		
6°	5.2264	10.4528		
7°	6.0935	12.1869		
8°	6.9587	13.9173		
9°	7.8217	15.6434		
10°	8.6824	17.3648		
11°	9.5404	19.0809		
12°	10.3956	20.7911		
13°	11.2476	22.4951		
14°	12.0961	24.1921		
15°	12.9401	25.8819		
16°	13.7819	27.5637		
17°	14.6186	29.2371		
18°	15.4058	30.9017		
19°	16.2784	32.5586		
20°	17.1010	34.2020		
21°	17.9184	35.8367		
22°	18.7303	37.4606		
23°	19.5366	39.0713		
24°	20.3368	40.6736		
25°	21.1309	42.2618		
26°	21.9186	43.8371		
27°	22.6995	45.3990		
28°	23.4736	46.9471		
29°	24.2405	48.4809		
30°	25.0000	50.0000		
31°	25.7519	51.5038		
32°	26.4960	52.9919		
33°	27.2320	54.4639		
34°	27.9596	55.9192		
35°	28.6788	57.3576		
36°	29.3893	58.7785		
37°	30.0908	60.1815		
38°	30.7831	61.5661		
39°	31.4660	62.9320		
40°	32.1394	64.2787		
41°	32.8030	65.6059		
42°	33.4565	66.9130		
43°	34.0999	68.1998		
44°	34.7329	69.4658		
45°	35.3553	70.7106		

SINE BAR